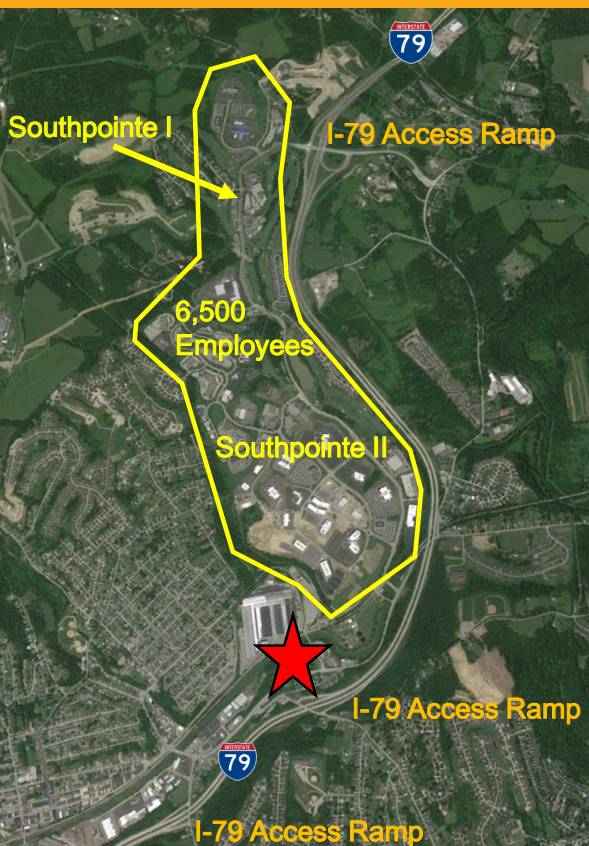


Now Available - Southpointe Pad Sites

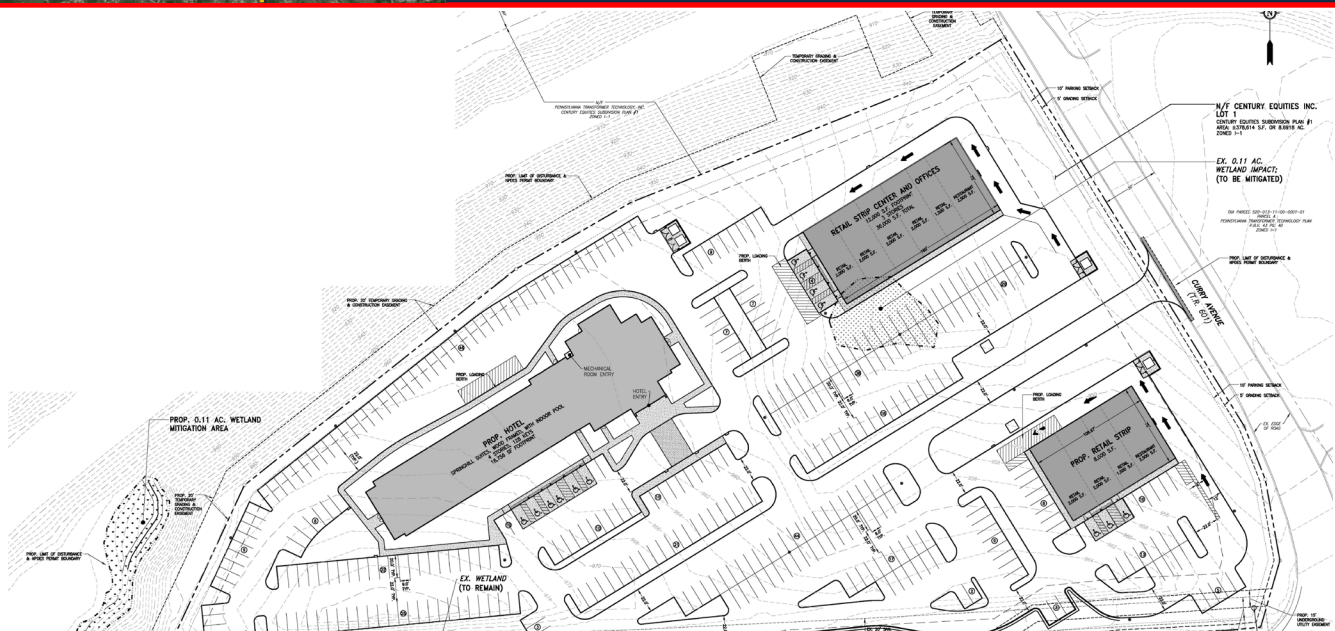
Morganza Road at Curry Avenue

Canonsburg, PA 15317



Property Information

- Office, restaurant, and retail pad sites available adjacent to new 110 room Marriott hotel
- Proposed outparcel pad for stand-alone restaurant or retail strip center with drive-through
- Proposed 12,000 SF retail strip center with drive-through and up to 24,000 SF office space above
- Excellent building signage
- High visibility from I-79
- Strong growth area in the heart of Marcellus Shale Region
- Limited number of restaurant pads available in the Southpointe Business area and stretch along I-79
- Near Southpointe Business Park and I-79 (Pittsburgh area)
- Over 6,500 employees at Southpointe
- 200 companies represented



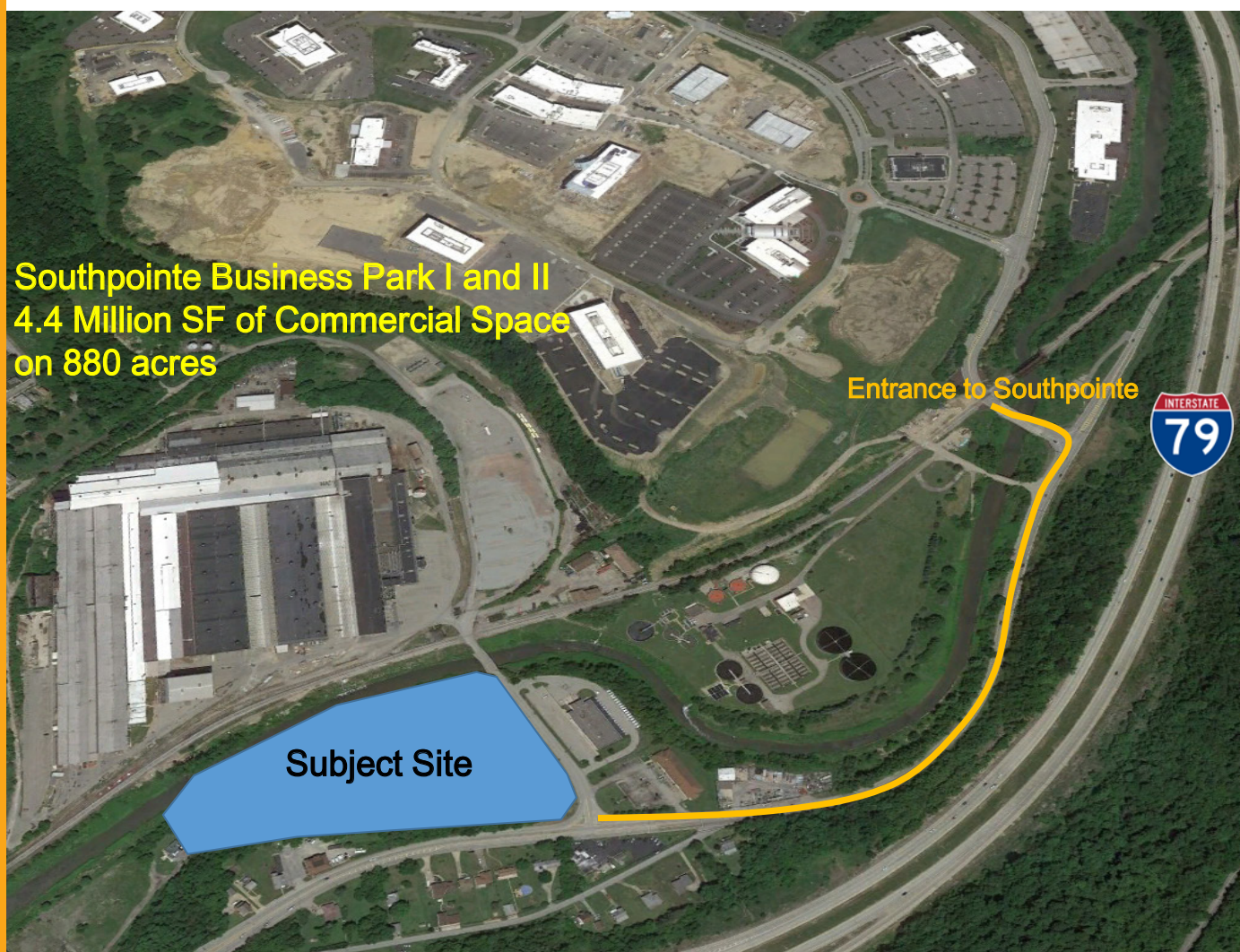
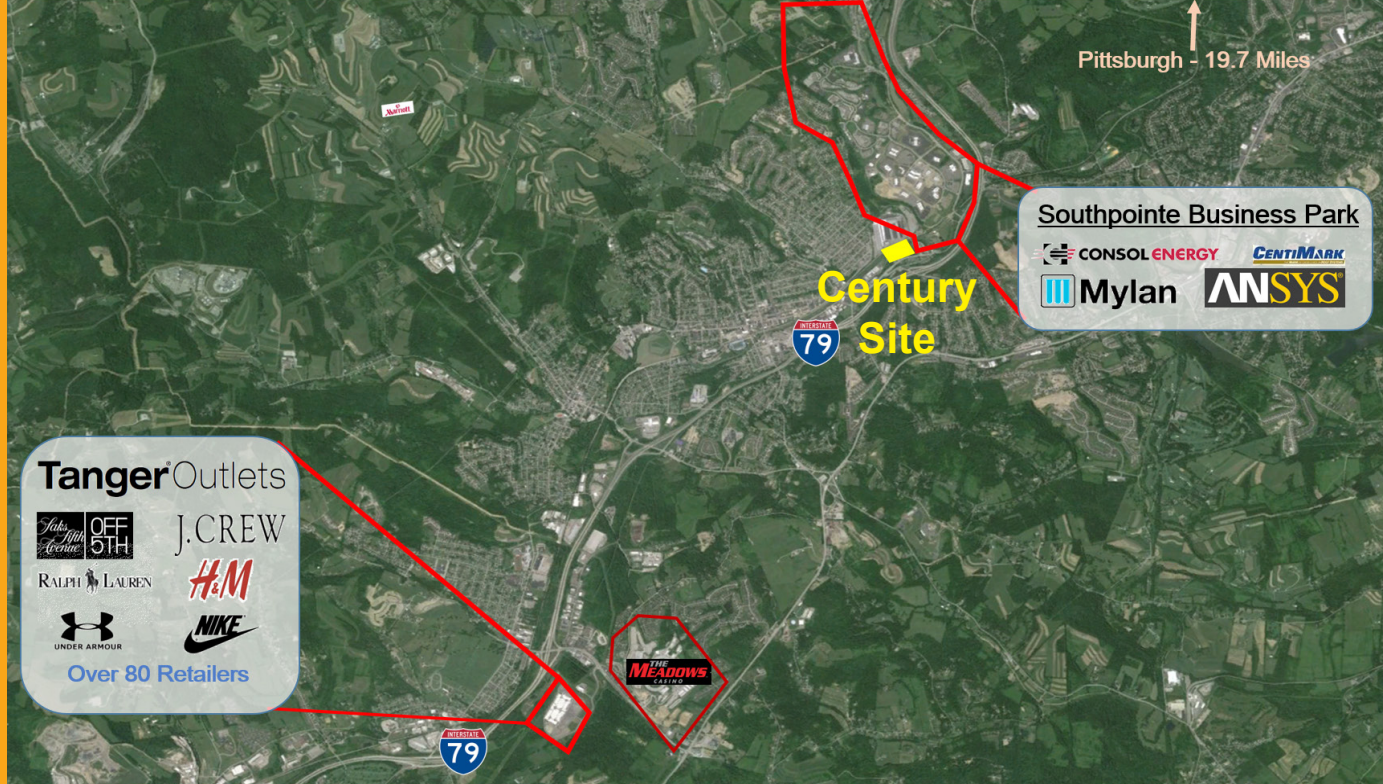
For More Information, Please Contact:

Adam Weidner
aweidner@century-realty.com
304.232.5411

John Aderholt, Broker
jdaderholt@centuryequities.com
304.232.5411

Jessica Jarosz
jjjarosz@century-realty.com
412.512.1330

Century Centre - 1233 Main Street, Suite 1500 - Wheeling, WV 26003
960 Penn Avenue, Suite 1001 - Pittsburgh, PA 15222
304.232.5411 - www.century-realty.com



Century Centre
1233 Main Street, Suite 1500
Wheeling, WV 26003

**960 Penn Avenue
Suite 1001
Pittsburgh, PA 15222**

304.232.5411 ■ www.century-realty.com



Ownership has provided the property information to the best of its knowledge, but Century Realty does not guarantee that all information is accurate. All property information should be confirmed before any completed transaction.

For More Information, Please Contact:

Adam Weidner
aweidner@century-realty.com
304.232.5411

John Aderholt, Broker
jdaderholt@centuryequities.com
304.232.5411

Jessica Jarosz
jjarosz@century-realty.com
412.512.1330