

For Lease - Office Space The Hare Building 48 14th Street, Wheeling, WV 26003



Property Information

- Approximately 900 - 2,800 gross square feet of office space available on the second & third floors in Downtown Wheeling's Central Business District
- Spacious & partially furnished private offices
- Certified Historic Rehabilitated Structure with a warm & inviting atmosphere
- Historically renovated Building
- Basement dead file storage space available
- Situated just 38 miles southwest of Pittsburgh & 120 miles east of Columbus, along Interstate 70
- Located in the heart of the Marcellus and Utica gas shale
- Easy access elevator



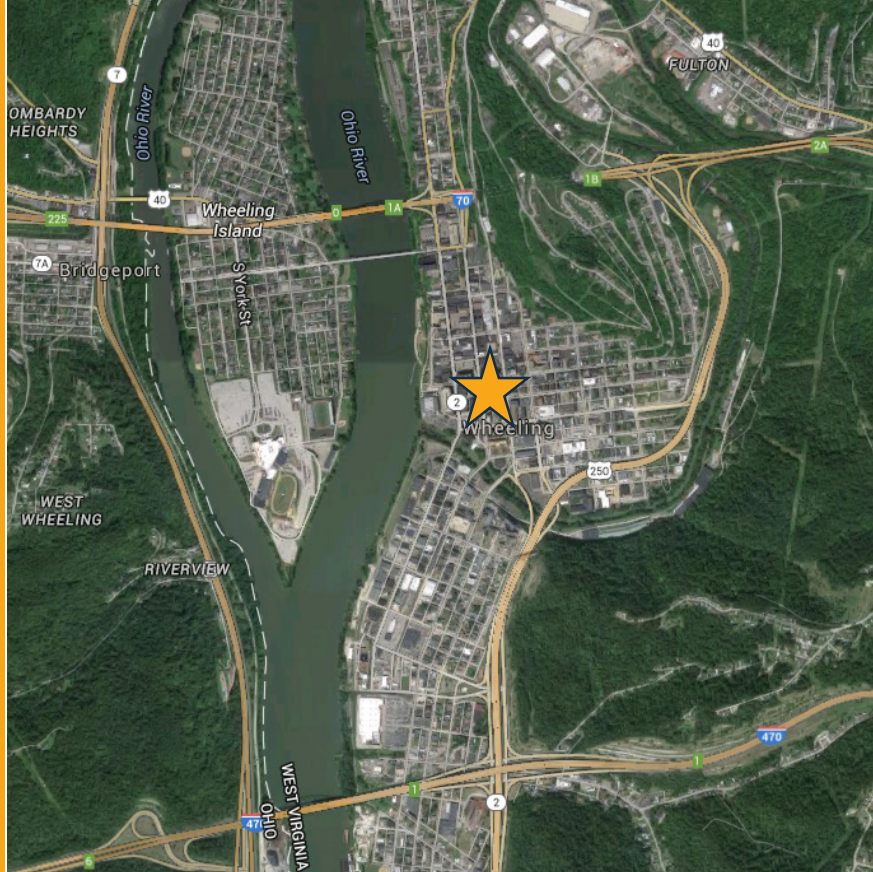
For More Information, Please Contact:

Adam Weidner
aweidner@century-realty.com
304.232.5411

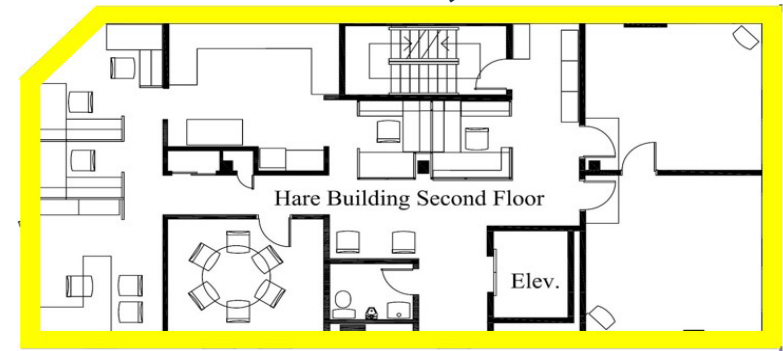
John Aderholt
jdaderholt@centuryequities.com
304.232.5411

Jessica Jarosz
jjarosz@century-realty.com
412.235.7233

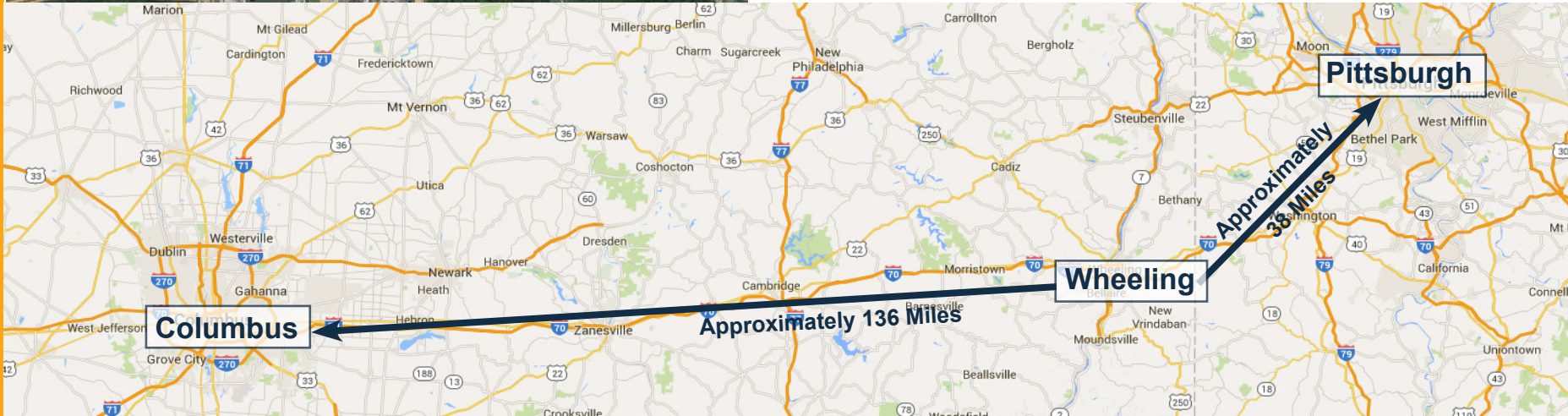
Century Centre - 1233 Main Street, Suite 1500 - Wheeling, WV 26003
960 Penn Avenue, Suite 1001 - Pittsburgh, PA 15222
304.232.5411 - www.century-realty.com



Second Floor - 1,900 SF



Third Floor - 900 SF



Ownership has provided the property information to the best of its knowledge, but Century Realty does not guarantee that all information is accurate. All property information should be confirmed before any completed transaction.

For More Information, Please Contact:

Adam Weidner
aweidner@century-realty.com
304.232.5411

John Aderholt
jaderholt@centuryequities.com
304.232.5411

Jessica Jarosz
jjarosz@century-realty.com
412.235.7233

