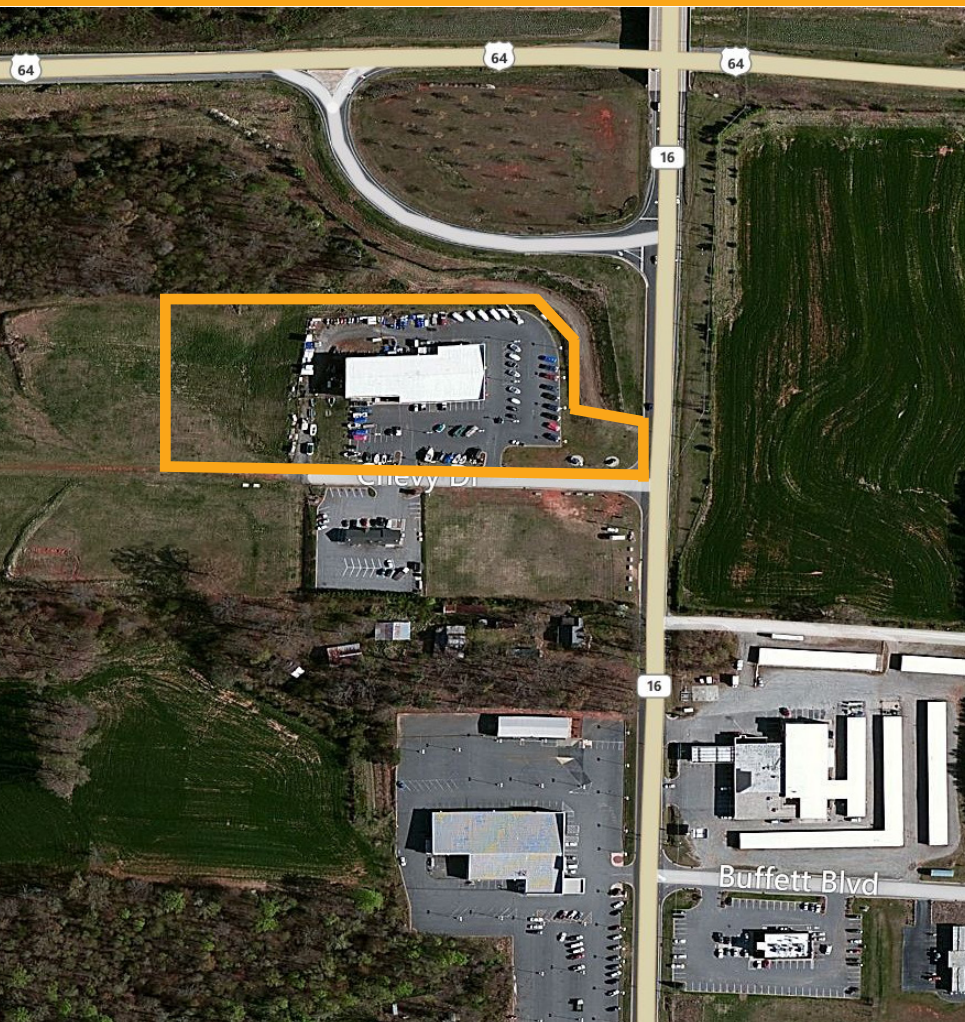


# Now Available - Land NC Highway 16 S Taylorsville, NC 28681



## Property Information

- 5.5 usable acres along the major retail corridor on NC Highway 16 S
- Excellent frontage for a retail tenant
- Located near Walmart, Pizza Hut, Advanced Auto Parts, Wendy's & Bojangles' Famous Chicken 'n Biscuits
- Abundant parking available on site
- Traffic count at NC Highway 16 & US Route 64 intersection is 13,000 vehicles (2014 count)
- Taylorsville city limits (County seat of Alexander County) & part of the Hickory–Lenoir–Morganton Metropolitan Statistical Area
- Alexander County population - 37,392 (2014 estimate)
- Dry county but beer sales in gas stations within city limits permitted

For More Information, Please Contact:

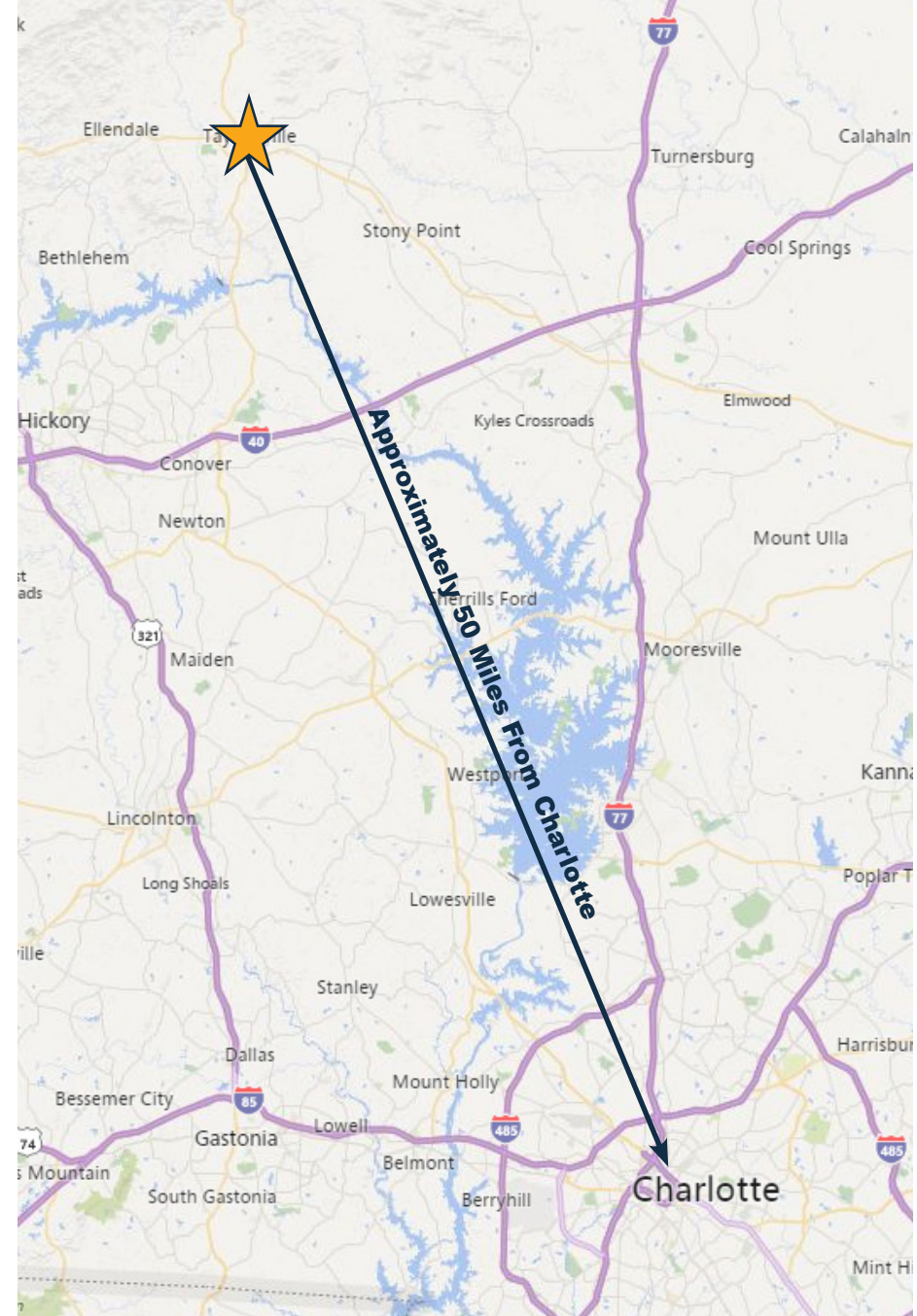
Adam Weidner  
aweidner@century-realty.com  
304.232.5411

John Aderholt, Broker  
jdaderholt@centuryequities.com  
304.232.5411

Jessica Jarosz  
jjarosz@century-realty.com  
412.235.7233

Century Centre - 1233 Main Street, Suite 1500 - Wheeling, WV 26003  
960 Penn Avenue, Suite 1001 - Pittsburgh, PA 15222  
304.232.5411 - www.century-realty.com





Ownership has provided the property information to the best of its knowledge, but Century Realty does not guarantee that all information is accurate. All property information should be confirmed before any completed transaction.

For More Information, Please Contact:

Adam Weidner  
aweidner@century-realty.com  
304.232.5411

John Aderholt, Broker  
jdaderholt@centuryequities.com  
304.232.5411

Jessica Jarosz  
jjarosz@century-realty.com  
412.235.7233

