

# For Lease - Office Space The Hare Building 48 14th Street, Wheeling, WV 26003



## Property Information

- Approximately 900 - 3,000 gross square feet of office space available on the second & third floors in Downtown Wheeling's Central Business District
- Spacious & partially furnished private offices
- Certified Historic Rehabilitated Structure with a warm & inviting atmosphere
- Historically renovated Building
- Basement dead file storage space available
- Situated just 38 miles southwest of Pittsburgh & 120 miles east of Columbus, along Interstate 70
- Located in the heart of the Marcellus and Utica gas shale
- Easy access elevator



For More Information, Please Contact:

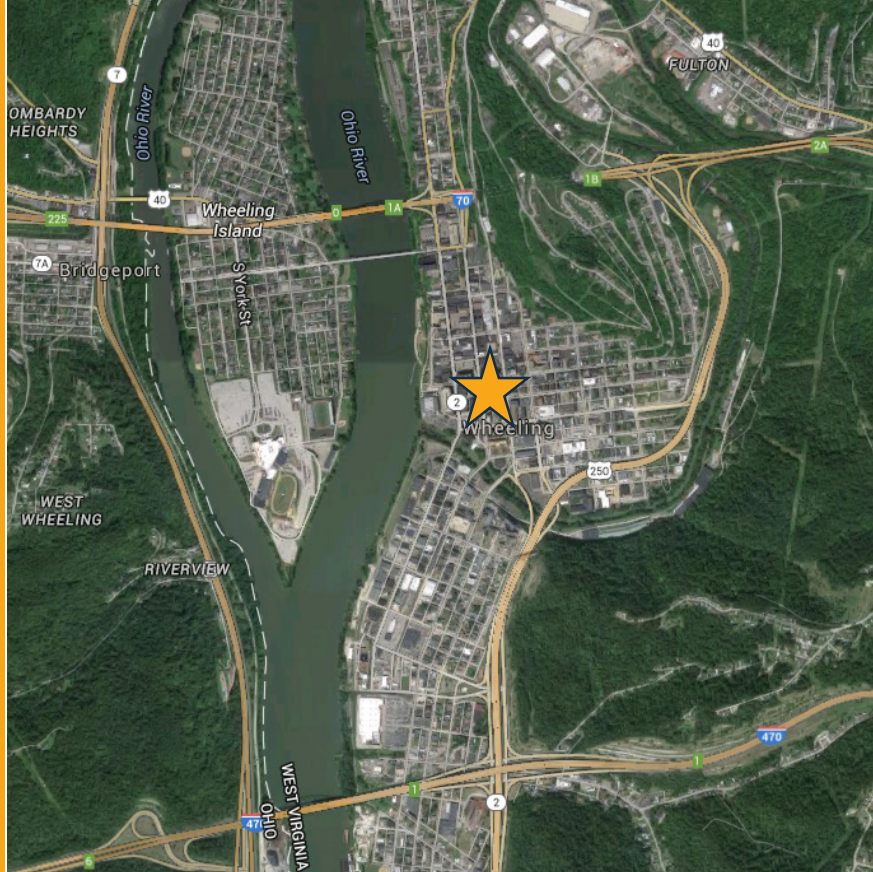
Adam Weidner  
aweidner@century-realty.com  
304.232.5411

John Aderholt  
jdaderholt@centuryequities.com  
304.232.5411

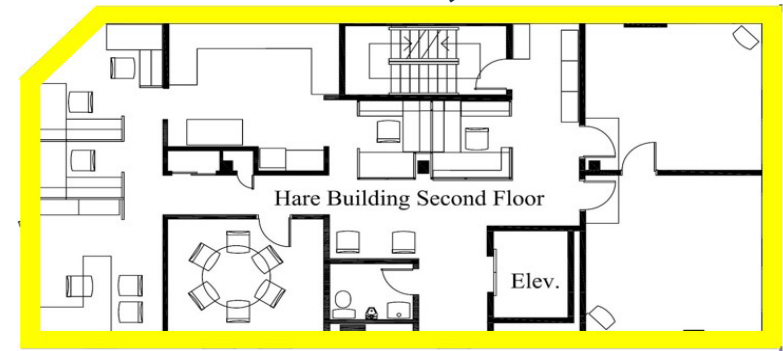
Jessica Jarosz  
jjarosz@century-realty.com  
412.235.7233

Century Centre - 1233 Main Street, Suite 1500 - Wheeling, WV 26003  
960 Penn Avenue, Suite 1001 - Pittsburgh, PA 15222  
304.232.5411 - [www.century-realty.com](http://www.century-realty.com)

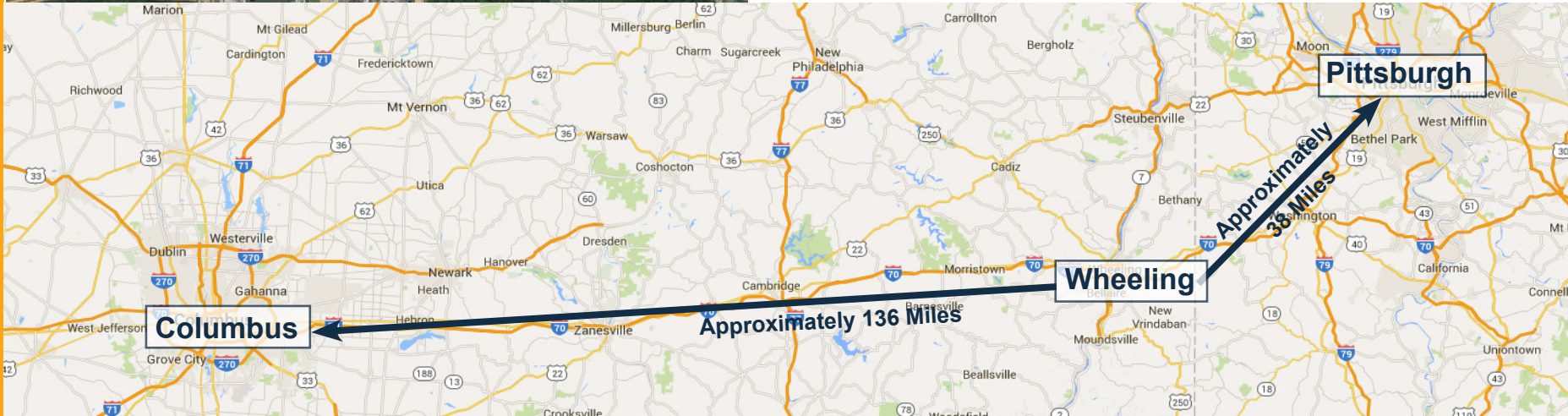




## Second Floor - 2,000 SF



## Third Floor - 900 SF



Ownership has provided the property information to the best of its knowledge, but Century Realty does not guarantee that all information is accurate. All property information should be confirmed before any completed transaction.

For More Information, Please Contact:

Adam Weidner  
aweidner@century-realty.com  
304.232.5411

John Aderholt  
jaderholt@centuryequities.com  
304.232.5411

Jessica Jarosz  
jjarosz@century-realty.com  
412.235.7233

